

Validation result

Msg Data Unaccounted for in Profile

- Error: G1R.G2R.OBX.15.2 [G2R.OBX.Producer's ID text][36.15] - specified value LENGTH (20) exceeded - "LabCorp I
- Error: G1R.G2R.OBX.15.2 [G2R.OBX.Producer's ID text][37.15] - specified value LENGTH (20) exceeded - "LabCorp I
- Error: G1R.G2R.OBX.15.2 [G2R.OBX.Producer's ID text][38.15] - specified value LENGTH (20) exceeded - "LabCorp I
- Error: G1R.G2R.OBX.15.2 [G2R.OBX.Producer's ID text][39.15] - specified value LENGTH (20) exceeded - "LabCorp I
- Error: G1R.G2R.OBX.15.2 [G2R.OBX.Producer's ID text][40.15] - specified value LENGTH (20) exceeded - "LabCorp I
- Error: G1R.G2R.OBX.15.2 [G2R.OBX.Producer's ID text][41.15] - specified value LENGTH (20) exceeded - "LabCorp I
- Error: G1R.G2R.OBX.15.2 [G2R.OBX.Producer's ID text][42.15] - specified value LENGTH (20) exceeded - "LabCorp I
- Error: G1R.G2R.OBX.15.2 [G2R.OBX.Producer's ID text][43.15] - specified value LENGTH (20) exceeded - "LabCorp I
- Error: G1R.G2R.OBX.15.2 [G2R.OBX.Producer's ID text][44.15] - specified value LENGTH (20) exceeded - "LabCorp I
- Error: G1R.G2R.OBX.15.2 [G2R.OBX.Producer's ID text][45.15] - specified value LENGTH (20) exceeded - "LabCorp I
- Error: G1R.G2R.OBX.15.2 [G2R.OBX.Producer's ID text][46.15] - specified value LENGTH (20) exceeded - "LabCorp I
- Error: G1R.G2R.OBX.15.2 [G2R.OBX.Producer's ID text][47.15] - specified value LENGTH (20) exceeded - "LabCorp I
- Error: G1R.G2R.OBX.15.2 [G2R.OBX.Producer's ID text][48.15] - specified value LENGTH (20) exceeded - "LabCorp I
- Error: G1R.G2R.OBX.15.2 [G2R.OBX.Producer's ID text][49.15] - specified value LENGTH (20) exceeded - "LabCorp I
- Error: G1R.G2R.OBX.15.2 [G2R.OBX.Producer's ID text][50.15] - specified value LENGTH (20) exceeded - "LabCorp I
- Error: G1R.G2R.OBX.15.2 [G2R.OBX.Producer's ID text][51.15] - specified value LENGTH (20) exceeded - "LabCorp I
- Error: G1R.G2R.OBX.15.2 [G2R.OBX.Producer's ID text][52.15] - specified value LENGTH (20) exceeded - "LabCorp I
- Error: G1R.G2R.OBX.15.2 [G2R.OBX.Producer's ID text][53.15] - specified value LENGTH (20) exceeded - "LabCorp I
- Error: G1R.G2R.OBX.15.2 [G2R.OBX.Producer's ID text][54.15] - specified value LENGTH (20) exceeded - "LabCorp I
- Error: G1R.G2R.OBX.15.2 [G2R.OBX.Producer's ID text][55.15] - specified value LENGTH (20) exceeded - "LabCorp I
- Error: G1R.G2R.OBX.15.2 [G2R.OBX.Producer's ID text][56.15] - specified value LENGTH (20) exceeded - "LabCorp I
- Error: G1R.G2R.OBX.15.2 [G2R.OBX.Producer's ID text][57.15] - specified value LENGTH (20) exceeded - "LabCorp I
- Error: G1R.G2R.OBX.15.2 [G2R.OBX.Producer's ID text][58.15] - specified value LENGTH (20) exceeded - "LabCorp I
- Error: G1R.G2R.OBX.15.2 [G2R.OBX.Producer's ID text][59.15] - specified value LENGTH (20) exceeded - "LabCorp I
- Error: G1R.G2R.OBX.15.2 [G2R.OBX.Producer's ID text][60.15] - specified value LENGTH (20) exceeded - "LabCorp I
- Error: G1R.G2R.OBX.15.2 [G2R.OBX.Producer's ID text][61.15] - specified value LENGTH (20) exceeded - "LabCorp I
- Error: G1R.G2R.OBX.15.2 [G2R.OBX.Producer's ID text][62.15] - specified value LENGTH (20) exceeded - "LabCorp I
- Error: G1R.G2R.OBX.15.2 [G2R.OBX.Producer's ID text][63.15] - specified value LENGTH (20) exceeded - "LabCorp I
- Error: G1R.G2R.OBX.15.2 [G2R.OBX.Producer's ID text][64.15] - specified value LENGTH (20) exceeded - "LabCorp I
- Error: G1R.G2R.OBX.15.2 [G2R.OBX.Producer's ID text][65.15] - specified value LENGTH (20) exceeded - "LabCorp I
- Error: G1R.G2R.OBX.15.2 [G2R.OBX.Producer's ID text][66.15] - specified value LENGTH (20) exceeded - "LabCorp I
- Error: G1R.G2R.OBX.15.2 [G2R.OBX.Producer's ID text][67.15] - specified value LENGTH (20) exceeded - "LabCorp I
- Error: G1R.G2R.OBX.15.2 [G2R.OBX.Producer's ID text][68.15] - specified value LENGTH (20) exceeded - "LabCorp I
- Error: G1R.G2R.OBX.15.2 [G2R.OBX.Producer's ID text][69.15] - specified value LENGTH (20) exceeded - "LabCorp I
- Error: G1R.G2R.OBX.15.2 [G2R.OBX.Producer's ID text][70.15] - specified value LENGTH (20) exceeded - "LabCorp I
- Error: G1R.G2R.OBX.15.2 [G2R.OBX.Producer's ID text][71.15] - specified value LENGTH (20) exceeded - "LabCorp I
- Error: G1R.G2R.OBX.15.2 [G2R.OBX.Producer's ID text][72.15] - specified value LENGTH (20) exceeded - "LabCorp I
- Error: G1R.G2R.OBX.15.2 [G2R.OBX.Producer's ID text][73.15] - specified value LENGTH (20) exceeded - "LabCorp I
- Error: G1R.G2R.OBX.15.2 [G2R.OBX.Producer's ID text][74.15] - specified value LENGTH (20) exceeded - "LabCorp I
- Error: G1R.G2R.OBX.15.2 [G2R.OBX.Producer's ID text][75.15] - specified value LENGTH (20) exceeded - "LabCorp I
- Error: G1R.G2R.OBX.15.2 [G2R.OBX.Producer's ID text][76.15] - specified value LENGTH (20) exceeded - "LabCorp I
- Error: G1R.G2R.OBX.15.2 [G2R.OBX.Producer's ID text][77.15] - specified value LENGTH (20) exceeded - "LabCorp I
- Error: G1R.G2R.OBX.15.2 [G2R.OBX.Producer's ID text][78.15] - specified value LENGTH (20) exceeded - "LabCorp I
- Error: G1R.G2R.OBX.15.2 [G2R.OBX.Producer's ID text][79.15] - specified value LENGTH (20) exceeded - "LabCorp I
- Error: G1R.G2R.OBX.15.2 [G2R.OBX.Producer's ID text][80.15] - specified value LENGTH (20) exceeded - "LabCorp I
- Error: G1R.G2R.OBX.15.2 [G2R.OBX.Producer's ID text][81.15] - specified value LENGTH (20) exceeded - "LabCorp I
- Error: G1R.G2R.OBX.15.2 [G2R.OBX.Producer's ID text][82.15] - specified value LENGTH (20) exceeded - "LabCorp I
- Error: G1R.G2R.OBX.15.2 [G2R.OBX.Producer's ID text][83.15] - specified value LENGTH (20) exceeded - "LabCorp I
- Error: G1R.G2R.OBX.15.2 [G2R.OBX.Producer's ID text][84.15] - specified value LENGTH (20) exceeded - "LabCorp I
- Error: G1R.G2R.OBX.15.2 [G2R.OBX.Producer's ID text][85.15] - specified value LENGTH (20) exceeded - "LabCorp I
- Error: G1R.G2R.OBX.15.2 [G2R.OBX.Producer's ID text][86.15] - specified value LENGTH (20) exceeded - "LabCorp I
- Error: G1R.G2R.OBX.15.2 [G2R.OBX.Producer's ID text][87.15] - specified value LENGTH (20) exceeded - "LabCorp I
- Error: G1R.G2R.OBX.15.2 [G2R.OBX.Producer's ID text][88.15] - specified value LENGTH (20) exceeded - "LabCorp I
- Error: G1R.G2R.OBX.15.2 [G2R.OBX.Producer's ID text][89.15] - specified value LENGTH (20) exceeded - "LabCorp I
- Error: G1R.G2R.OBX.15.2 [G2R.OBX.Producer's ID text][90.15] - specified value LENGTH (20) exceeded - "LabCorp I
- Error: G1R.G2R.OBX.15.2 [G2R.OBX.Producer's ID text][91.15] - specified value LENGTH (20) exceeded - "LabCorp I
- Error: G1R.G2R.OBX.15.2 [G2R.OBX.Producer's ID text][92.15] - specified value LENGTH (20) exceeded - "LabCorp I
- Error: G1R.G2R.OBX.15.2 [G2R.OBX.Producer's ID text][93.15] - specified value LENGTH (20) exceeded - "LabCorp I
- Error: G1R.G2R.OBX.15.2 [G2R.OBX.Producer's ID text][94.15] - specified value LENGTH (20) exceeded - "LabCorp I
- Error: G1R.G2R.OBX.15.2 [G2R.OBX.Producer's ID text][95.15] - specified value LENGTH (20) exceeded - "LabCorp I
- Error: G1R.G2R.OBX.15.2 [G2R.OBX.Producer's ID text][96.15] - specified value LENGTH (20) exceeded - "LabCorp I
- Error: G1R.G2R.OBX.15.2 [G2R.OBX.Producer's ID text][97.15] - specified value LENGTH (20) exceeded - "LabCorp I
- Error: G1R.G2R.OBX.15.2 [G2R.OBX.Producer's ID text][98.15] - specified value LENGTH (20) exceeded - "LabCorp I
- Error: G1R.G2R.OBX.15.2 [G2R.OBX.Producer's ID text][99.15] - specified value LENGTH (20) exceeded - "LabCorp I
- Error: G1R.G2R.OBX.15.2 [G2R.OBX.Producer's ID text][100.15] - specified value LENGTH (20) exceeded - "LabCorp I

Required Element

- Error: G1R.G2R.OBX.3.1 [G2R.OBX.Observation Identifier Identifier][10.4] - MISSING required value
- Error: G1R.G2R.OBX.3.1 [G2R.OBX.Observation Identifier Identifier][11.4] - MISSING required value
- Error: G1R.G2R.OBX.3.1 [G2R.OBX.Observation Identifier Identifier][12.4] - MISSING required value
- Error: G1R.G2R.OBX.3.1 [G2R.OBX.Observation Identifier Identifier][13.4] - MISSING required value

Current Status

- Identified issues with Volume V specification
- Feedback provided to NAACCR Pathology Data (formerly E-Path Transmission) WKGP for resolution

Evaluation of Text Mining Tools for ePath Reporting

Project Purpose

- Identify non-proprietary (free) software tools that will search blocks of text to identify terms and concepts
- Provide information on available tools
- Compare functionality of available tools

Methods

- Literature search using
 - Text mining textbooks
 - Online search of research articles
 - Proprietary text mining white paper
- Evaluation of software tools was conducted by:
 - Obtaining and installing tool;
 - Evaluation criteria:
 - Ease of installation and use
 - Determining the need for modification of tool to meet cancer registry needs
 - Ease in making modifications
 - Performance of the software tool against a trained database of electronic pathology reports

Non-Proprietary Tools Identified

- GATE:** General Architecture for Text Engineering
- HITEx:** Health Information Text Extraction
- CaFE:** Registry Case Finding Engine
- Extended MedLEE:** Medical Language Extraction and Encoding System
- caTIES:** cancer Text Information Extraction System
- HITEx and caTIES are fully portable, but may be more tool than is needed.

Proprietary Tools Identified

- Semantic-Knowledge's Semantic Engine
- Attensity's Text Analytics Suite
- SAS's Text Miner
- Proprietary tools highlight the scalability, management of annotations/lexicons, administration and security features
- Include an end user interface that allows Q&A sessions after unstructured text has been machine analyzed (not available in open source tools)

CHILD HEALTH • GLOBAL PARTNERSHIPS • MINORITY OUTREACH • MONITORING HEALTH • COMMUNITY PARTNERSHIP
 SAFER • HEALTHIER • PEOPLE • SAFER • HEALTHIER • PEOPLE • SAFER • HEALTHIER • PEOPLE • SAFER • HEA
 HEALTH EDUCATION • EPIDEMIOLOGY • WORKPLACE HEALTH • IMMUNIZATION • WORKPLACE SAFETY • TRAINING

Next Steps

- Acquire copies of these tools:
 - HITex
 - caTIES
- Evaluate the amount of revision needed to allow them to be “plug and play” within a registry
- Evaluate their performance –accuracy of results and ease of use – against a trained data set provided by the Florida Cancer Data Service (FCDS)
- Produce a final report that fully documents process, results, and recommendations

CHILD HEALTH • GLOBAL PARTNERSHIPS • MINORITY OUTREACH • MONITORING HEALTH • COMMUNITY PARTNERSHIP
 SAFER • HEALTHIER • PEOPLE • SAFER • HEALTHIER • PEOPLE • SAFER • HEALTHIER • PEOPLE • SAFER • HEA
 HEALTH EDUCATION • EPIDEMIOLOGY • WORKPLACE HEALTH • IMMUNIZATION • WORKPLACE SAFETY • TRAINING

Reporting Pathology Protocol Project

CHILD HEALTH • GLOBAL PARTNERSHIPS • MINORITY OUTREACH • MONITORING HEALTH • COMMUNITY PARTNERSHIP
 SAFER • HEALTHIER • PEOPLE • SAFER • HEALTHIER • PEOPLE • SAFER • HEALTHIER • PEOPLE • SAFER • HEA
 HEALTH EDUCATION • EPIDEMIOLOGY • WORKPLACE HEALTH • IMMUNIZATION • WORKPLACE SAFETY • TRAINING

SNOMED CT Encoded CAP Checklist

- TUMOR SITE [R-0025A, 371480007] Tumor site (observable entity)
- ___ Cecum [T-59100, 32713005] Cecum structure (body structure)
 - ___ Right (ascending) colon [T-59400, 51342009] Right colon structure (body structure)
 - ___ Hepatic flexure [T-59438, 48338005] Structure of right colic flexure (body structure)
 - ___ Transverse colon [T-59440, 485005] Transverse colon structure (body structure)
 - ___ Splenic flexure [T-59442, 72592005] Structure of left colic flexure (body structure)
 - ___ Left (descending) colon [T-59450, 55572008] Left colon structure (body structure)
 - ___ Sigmoid colon [T-59470, 60184004] Sigmoid colon structure (body structure)
 - ___ Rectum [T-59600, 34402009] Rectum structure (body structure)
 - ___ Not specified [T-59000, 14742008] Large intestinal structure (body structure)

SNOMED CT Encoded CAP Checklists (SECCC)

- Computerization Plans
 - Create database structure to allow specification of all data elements required to unambiguously and consistently render the checklist in a computer readable format (MS Access Database)
 - Contain versioning information
 - Create plug and play tool for software developers
 - Map NAACCR Data Items including Collaborative Stage
 - Collaboration with Cancer Care of Ontario
 - Common Server for Coders and Editors

CHILD HEALTH • GLOBAL PARTNERSHIPS • MINORITY OUTREACH • MONITORING HEALTH • COMMUNITY PARTNERSHIP
 SAFER • HEALTHIER • PEOPLE • SAFER • HEALTHIER • PEOPLE • SAFER • HEALTHIER • PEOPLE • SAFER • HEA
 HEALTH EDUCATION • EPIDEMIOLOGY • WORKPLACE HEALTH • IMMUNIZATION • WORKPLACE SAFETY • TRAINING

"LUNG: Biopsy (Note: Use of checklist for biopsy specimens is optional)

*Patient name:
 *Surgical pathology number:
 Note: Check T response unless otherwise indicated

*MACROSCOPIC

*Specimen Type
 ___ Fiberoptic bronchoscopic biopsy
 ___ Transbronchial biopsy
 ___ Mediastinoscopic biopsy
 ___ Computed tomography-guided needle biopsy (specimen)
 ___ Wedge biopsy
 ___ Other (specify):
 ___ Not specified

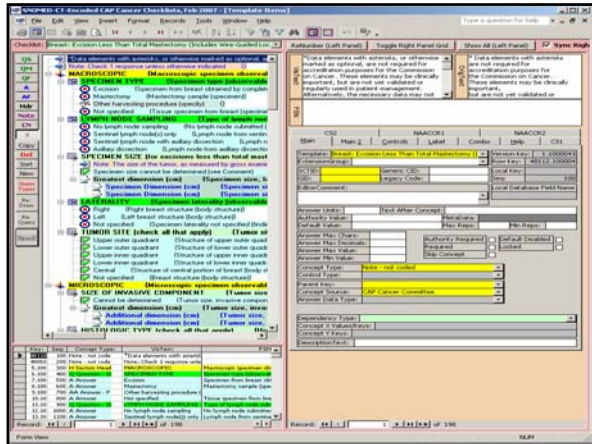
*SPECIMEN TYPE [R-00254, 371439000] Specimen type (observable entity)
 ___ Fiberoptic bronchoscopic biopsy [G-83346, 72611008] Specimen from lung obtained by fiberoptic bronchoscopic biopsy (specimen)
 ___ Transbronchial biopsy [G-83347, 122612001] Specimen from lung obtained by transbronchial biopsy (specimen)
 ___ Mediastinoscopic biopsy [G-83348, 122612001] Specimen from lung obtained by mediastinoscopic biopsy (specimen)
 ___ Computed tomography-guided needle biopsy [G-83427, 58746001] Specimen from lung obtained by CT guided needle biopsy (specimen)
 ___ Wedge biopsy [G-83427, 58746001] Specimen from lung obtained by wedge biopsy (specimen)
 ___ Other (specify):
 ___ Not specified [G-8421, 389526000] Tissue specimen from lung (specimen)

CAP Cancer Checklist

SNOMED CT Encoded Checklist

NAACCR Data Dictionary

	A	B	C	D	E	F	G	H	I	J	K	L	M	N	O	P
1																
2																
3																
4																
5																
6																
7																
8																
9																
10																
11																
12																
13																
14																
15																
16																
17																
18																
19																
20																
21																
22																
23																
24																
25																



Automatic Screen Generation

Hide Patient Info John Doe (Surgical Pathology Number: Surgical 1)

Surgical Pathology Cancer Case Summary (Checklist)
 College of American Pathologists Cancer Checklist: Breast: Excision Less Than Total Mastectomy (includes Wire-guided Localization Excisions), Total Mastectomy, Modified Radical Mastectomy, Radical Mastectomy

Protocol revision date: January 2005
 Applies to routine, consultative only
 Based on CAP: 1010007
 Based on ENCODE: 1010007 12:00:00 AM
 Breast Excision Less Than Total Mastectomy

Total Mastectomy
 Modified Radical Mastectomy
 Radical Mastectomy
 Excision of breast tissue

MACROSCOPIC

SPECIMEN TYPE

LUMEN/NOSE CAPTURED

SPECIMEN SIZE (the workbooks less than total mastectomy)

Specimen size cannot be determined (see Comment)

Note: The size of the tumor, as measured by gross examination, will be verified by microscopic examination. If there is a discrepancy between gross and microscopic tumor measurements, the microscopic measurement of the invasive component (size, percentage) and should be used for tumor staging.

Greatest Dimension

Specimen 1 Dimension

Specimen 2 Dimension

LATERALITY

TUMOR SITE (check all that apply)

Upper outer quadrant

Lower outer quadrant

Upper inner quadrant

Lower inner quadrant

Central

Current Status

- Testing of messages completed
- Message transmission of reports to begin May/June 2007
- Project evaluation criteria developed
- Evaluation process to begin after messages transmitted
- HL7 Messaging Workbench used to validate the messages

CHILD HEALTH • GLOBAL PARTNERSHIPS • MINORITY OUTREACH • MONITORING HEALTH • COMMUNITY PARTNERSHIP
 SAFER • HEALTHIER • PEOPLE • SAFER • HEALTHIER • PEOPLE • SAFER • HEALTHIER • PEOPLE • SAFER • HEALTHIER • PEOPLE • SAFER • HEA
 HEALTH EDUCATION • EPIDEMIOLOGY • WORKPLACE HEALTH • IMMUNIZATION • WORKPLACE SAFETY • TRAINING

HL7 Clinical Document Architecture (CDA)

CHILD HEALTH • GLOBAL PARTNERSHIPS • MINORITY OUTREACH • MONITORING HEALTH • COMMUNITY PARTNERSHIP
 SAFER • HEALTHIER • PEOPLE • SAFER • HEALTHIER • PEOPLE • SAFER • HEALTHIER • PEOPLE • SAFER • HEALTHIER • PEOPLE • SAFER • HEA
 HEALTH EDUCATION • EPIDEMIOLOGY • WORKPLACE HEALTH • IMMUNIZATION • WORKPLACE SAFETY • TRAINING

Activities

- Purpose: Test alternative formats for Vol II
- Pilot project with 2 sites (CA, VA)
- Providing technical support to NAACCR Clinical Data (formerly Cancer Abstract Transmission) WKGP
- Contracted with CDA Experts to develop an implementation guide and identify issues

CHILD HEALTH • GLOBAL PARTNERSHIPS • MINORITY OUTREACH • MONITORING HEALTH • COMMUNITY PARTNERSHIP
 SAFER • HEALTHIER • PEOPLE • SAFER • HEALTHIER • PEOPLE • SAFER • HEALTHIER • PEOPLE • SAFER • HEALTHIER • PEOPLE • SAFER • HEA
 HEALTH EDUCATION • EPIDEMIOLOGY • WORKPLACE HEALTH • IMMUNIZATION • WORKPLACE SAFETY • TRAINING

Web Plus

CHILD HEALTH • GLOBAL PARTNERSHIPS • MINORITY OUTREACH • MONITORING HEALTH • COMMUNITY PARTNERSHIP
 SAFER • HEALTHIER • PEOPLE • SAFER • HEALTHIER • PEOPLE • SAFER • HEALTHIER • PEOPLE • SAFER • HEALTHIER • PEOPLE • SAFER • HEA
 HEALTH EDUCATION • EPIDEMIOLOGY • WORKPLACE HEALTH • IMMUNIZATION • WORKPLACE SAFETY • TRAINING

Web Plus General Overview

- Web-based application used to collect cancer data securely over the public Internet
- Ideal for use by central registries for reporting from physicians' offices, low volume facilities, non-hospital reporting sources, follow-back efforts, and interstate data exchange
- Empowers central registries to meet the NPCR Program Standards for Electronic Data Exchange

CHILD HEALTH • GLOBAL PARTNERSHIPS • MINORITY OUTREACH • MONITORING HEALTH • COMMUNITY PARTNERSHIP
SAFER • HEALTHIER • PEOPLE • SAFER • HEALTHIER • PEOPLE • SAFER • HEALTHIER • PEOPLE • SAFER • HEA
HEALTH EDUCATION • EPIDEMIOLOGY • WORKPLACE HEALTH • IMMUNIZATION • WORKPLACE SAFETY • TRAINING • C

Web Plus Main Functions

- Online Abstraction
- File Uploading
- Data Editing
- Version 2: Physician Follow-back
- Supporting Functions
 - E-mail
 - Reports

CHILD HEALTH • GLOBAL PARTNERSHIPS • MINORITY OUTREACH • MONITORING HEALTH • COMMUNITY PARTNERSHIP
SAFER • HEALTHIER • PEOPLE • SAFER • HEALTHIER • PEOPLE • SAFER • HEALTHIER • PEOPLE • SAFER • HEA
HEALTH EDUCATION • EPIDEMIOLOGY • WORKPLACE HEALTH • IMMUNIZATION • WORKPLACE SAFETY • TRAINING • C



CDC–NPCR Web Plus Contacts

Kathleen K. Thoburn
CDC/NPCR Contractor
Email: kthoburn@cdc.gov

Sanjeev R. Baral
CDC/NPCR Contractor
Email: sbaral@cdc.gov

CHILD HEALTH • GLOBAL PARTNERSHIPS • MINORITY OUTREACH • MONITORING HEALTH • COMMUNITY PARTNERSHIP
SAFER • HEALTHIER • PEOPLE • SAFER • HEALTHIER • PEOPLE • SAFER • HEALTHIER • PEOPLE • SAFER • HEA
HEALTH EDUCATION • EPIDEMIOLOGY • WORKPLACE HEALTH • IMMUNIZATION • WORKPLACE SAFETY • TRAINING • C

Thank you

- Sandy Thames
- 770-488-5689
- sthames@cdc.gov



The findings and conclusions in this presentation are those of the author(s) and do not necessarily represent the views of the Centers for Disease Control and Prevention

CHILD HEALTH • GLOBAL PARTNERSHIPS • MINORITY OUTREACH • MONITORING HEALTH • COMMUNITY PARTNERSHIP
SAFER • HEALTHIER • PEOPLE • SAFER • HEALTHIER • PEOPLE • SAFER • HEALTHIER • PEOPLE • SAFER • HEA
HEALTH EDUCATION • EPIDEMIOLOGY • WORKPLACE HEALTH • IMMUNIZATION • WORKPLACE SAFETY • TRAINING • C