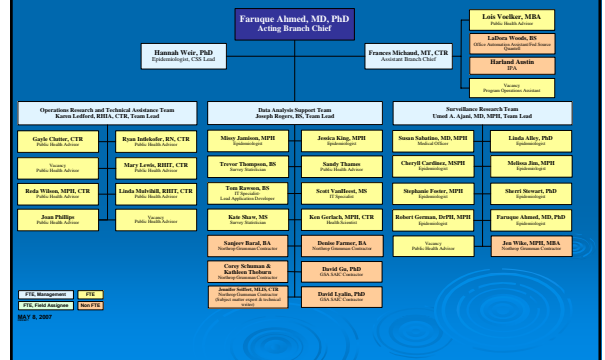


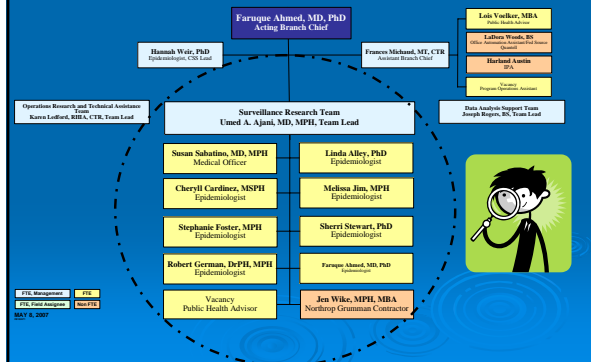
# Promoting the Use of Cancer Registry Data

## Surveillance Research Team

# Cancer Surveillance Branch



# Surveillance Research Team (SRT)



# SRT Mission

To work within the goals of CSB to:

- Design, conduct, and facilitate cancer surveillance research
- Build capacity among NPCR registries for cancer registry data use for cancer surveillance, prevention, and control and for surveillance research activities
- Collaborate with state partners to monitor and describe cancer burden at the state, regional, and national levels, and for special populations

# SRT Mechanisms

- Special studies
  - Patterns of Care (German); Cancer Mortality Study (Foster)
- Monographs
  - Colorectal monograph (Ahmed); AI/AN monograph (Jim); USCS (Cardinez)
- Collaborations
  - Report to the Nation; NPCR Clinical Data Writing Group (Stewart)
- Proposal process for studies requiring \$\$

# Division of Cancer Prevention and Control Proposal Process

- Occurs each fiscal year
- Proposals
  - Ideas are vetted through branch and sometimes SWG
  - Peer-reviewed and scored by DCPC (non-CSB) scientists
  - Ranked by DCPC Director and senior management and put forth for funding
- Following funding approval, RFAs are sent out; registry interest is solicited

## Initiated and Funded Proposals

- Generally reflect interests and/or expertise of SRT, CSB, or DCPC
- Can be restrictive to include only registries with:
  - Long-term data
  - Large case loads
  - Data that have been in all USCS publications

## Proposal Considerations

- Project justification
  - Need and projected impact
  - Contribution to program activity
- Funding amount and mechanism (contract/cooperative agreement)
- Project duration
- IRB and HIPAA restrictions
- Proposal examples
  - Registry operations
  - Data completeness
  - Data expansion (collection/linkages)
  - Survivorship

## SRT Contact Info

- Umed Ajani- [uaa0@cdc.gov](mailto:uaa0@cdc.gov)
- Linda Alley- [lka4@cdc.gov](mailto:lka4@cdc.gov)
- Cheryll Cardinez- [zzg3@cdc.gov](mailto:zzg3@cdc.gov)
- Stephanie Foster- [sob4@cdc.gov](mailto:sob4@cdc.gov)
- Bob German- [rrg1@cdc.gov](mailto:rrg1@cdc.gov)
- Melissa Jim- [ere0@cdc.gov](mailto:ere0@cdc.gov)
- Sue Sabatino- [bzo8@cdc.gov](mailto:bzo8@cdc.gov)
- Sherri Stewart- [awk5@cdc.gov](mailto:awk5@cdc.gov)
- Jen Wike- [bhn9@cdc.gov](mailto:bhn9@cdc.gov)