



CancerPlan.org is a Comprehensive Cancer Control (CCC) resource website developed for Comprehensive Cancer Control professionals to share resources and tools. CancerPlan.org allows users to share and develop information associated with Comprehensive Cancer Control planning, implementation and evaluation.



CancerPlan.org is a product of collaboration between the **American Cancer Society**, the **Centers for Disease Control and Prevention**, and the **National Cancer Institute**. These organizations are part of a larger collaboration called the National Partners for Comprehensive Cancer Control, which includes the following organizations:

- **American Cancer Society**
- **American College Of Surgeons Commission on Cancer**
- **C-Change**
- **Centers for Disease Control and Prevention**
- **Chronic Disease Directors**
- **Intercultural Cancer Council**
- **Lance Armstrong Foundation**
- **National Association of County and City Health Officials**
- **National Cancer Institute**
- **North American Association of Central Cancer Registries**

CancerPlan.org Registration

It is easy to register on CancerPlan.org!

Once you are registered on Cancerplan.org you will have full-access to all CancerPlan.org features.

With features like an interactive message board, registered users are at an advantage. They have the ability to receive updates whenever a new Comprehensive Cancer Control (CCC) discussion is posted on the CancerPlan.org message board.

Another advantage to being a registered user is you will have access to upcoming features. An upcoming feature like the Comprehensive Cancer Control Coalition Workbook allows registered users the option of being part of a private coalition workspace.

The first step for registration is navigating to **www.cancerplan.org**. Once you are on the CancerPlan.org homepage scroll-down to the *Log-in/Registration* area, on the left-hand side of the website. Click-on the **Register** link, highlighted in bold-blue, and then follow the steps through the registration process.

If you have any problems during registration, just email **cancerplan@cancer.org**.

Features on CancerPlan.org

CancerPlan.org offers various features to aid in the development and implementation of Comprehensive Cancer Control plans for states, tribes and territories. Most features are available to the public. Registration is needed in order to get full access to all features on the CancerPlan.org.

Here are some of the features that CancerPlan.org has made available to Comprehensive Cancer Control professionals:

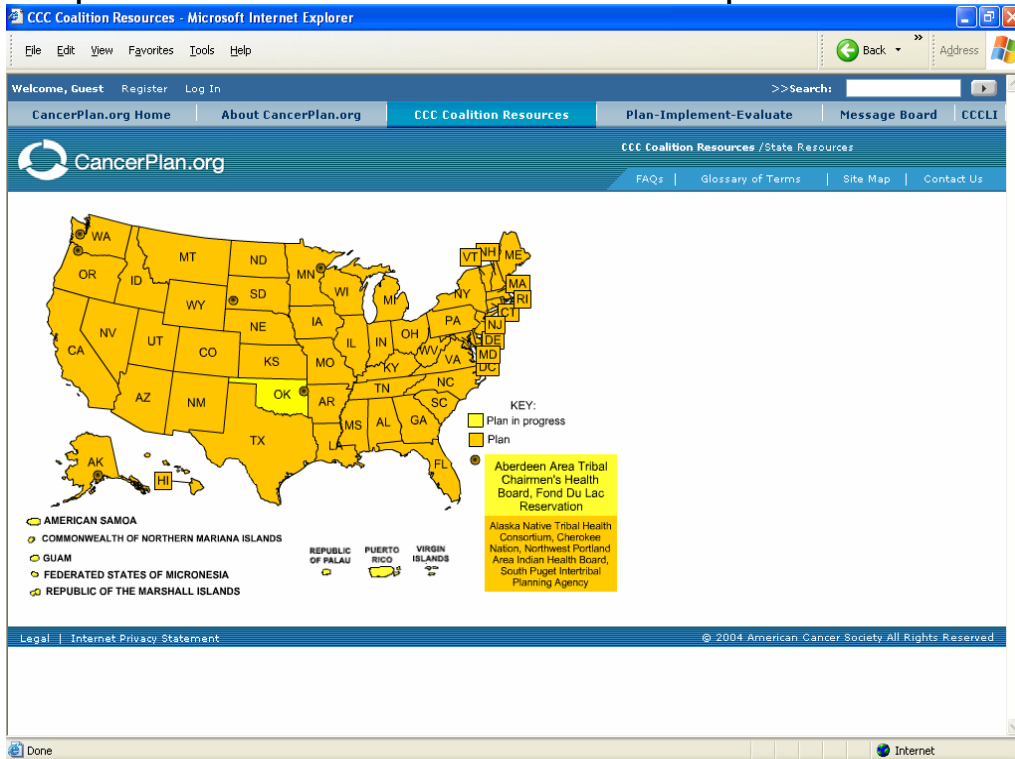
- **CancerPlan.org Homepage with highlights and logo-links** – The CancerPlan.org homepage acts as a gateway to all other features offered by CancerPlan.org.

The **highlights** on the homepage spotlight current Comprehensive Cancer Control activities such as the Comprehensive Cancer Control Leadership Institutes (CCCLI). There are also frequent updates on state, tribe and territory cancer plan developments.

The **logo-links** on the CancerPlan.org homepage feature major CancerPlan.org resources such as the *CancerPlan.org message board*.

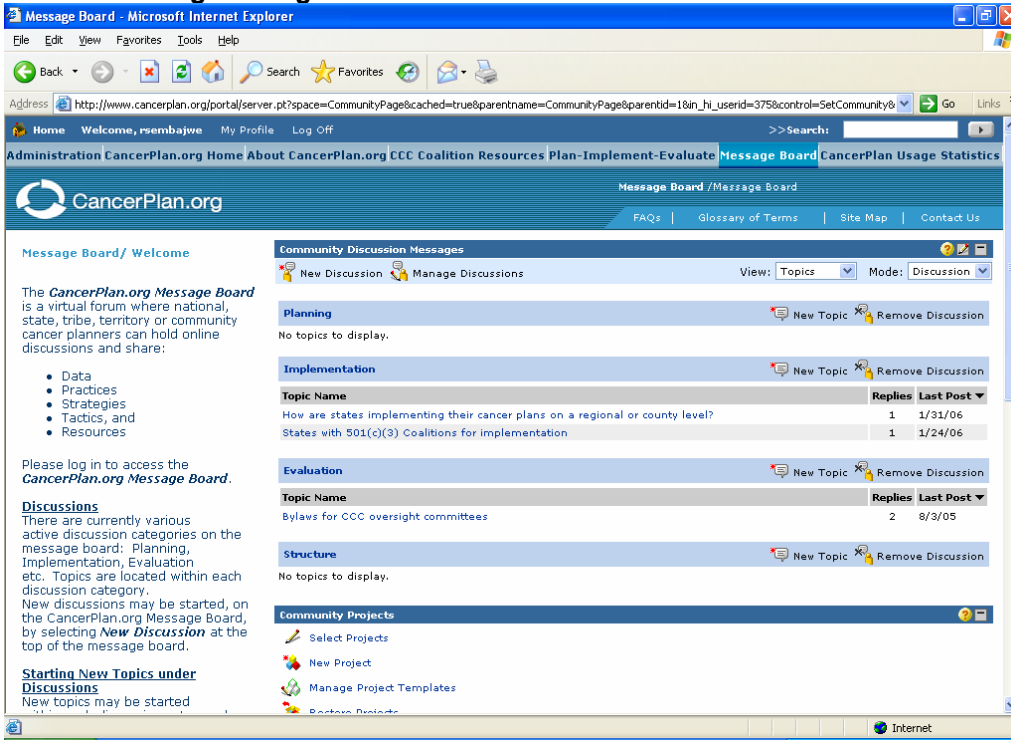
- **Comprehensive Cancer Control Plan-Implement-Evaluate Section –** This is a section that holds Comprehensive Cancer Control (CCC) materials related to Planning, Implementation and Evaluation.
- **Comprehensive Cancer Control Coalition Resources Section -** This section is categorized by coalition. It holds Comprehensive Cancer Control (CCC) materials associated with each coalition. Here you will find individual Comprehensive Cancer Control plans specific to each coalition.
- **Comprehensive Cancer Control Leadership Institute Section (CCCLI Section) –** This is a section to hold materials from past and present Comprehensive Cancer Control Leadership Institutes (CCCLI).
- **Enhanced Submit Documents Option –** This is an enhanced submit documents feature. It allows Comprehensive Cancer Control professionals more control over where they would like their documents to live on Cancerplan.org.
- **Glossary Of Terms Section –** This is a directory of Comprehensive Cancer Control (CCC) terms. It is available to all CancerPlan.org users.
- **Comprehensive Cancer Control Coalition Resources Map -** This is a clickable map. It is color-coded according to states, tribes and territories with plans or plans in progress. Each state, tribe and territory on the map gives you access to coalition specific cancer plans and resources.

Comprehensive Cancer Control Coalition Resources Map



- **CancerPlan.org Message Board** – This feature allows Comprehensive Cancer Control professionals to share ideas related to planning, implementation and evaluation. The CancerPlan.org message board is a password protected feature. In order to take advantage of this feature it is necessary to register on CancerPlan.org.

CancerPlan.org Message Board



Currently, there are active discussions on the Cancerplan.org message board. To post a message on the CancerPlan.org message board, you must log-on to Cancerplan.org and access the message board. Once you are on the message board webpage select *New Discussion*, at the top-left hand corner of the message board.

Once you have set-up a new discussion you can start various topics under that new discussion.

Further instructions for the message board can be found on the CancerPlan.org message board webpage.

Future Features on CancerPlan.org

As CancerPlan.org continues to grow, its future enhancements will positively influence the advancement of Comprehensive Cancer Control practices.

Here is a feature that will be available on CancerPlan.org in the near future:

- **Comprehensive Cancer Control Coalition Workbook** – This is comprised of private workspaces available for each coalition. These private workspaces are areas used to develop comprehensive cancer plans and related documents.

Email CancerPlan.org

CancerPlan.org welcomes your emails!

Any comments, concerns and/or recommendations related to Cancerplan.org are encouraged. You can also email CancerPlan.org with Comprehensive Cancer Control information that is worthy of spotlighting and, you may find it posted on the CancerPlan.org highlights section.

Send all emails to **cancerplan@cancer.org**